

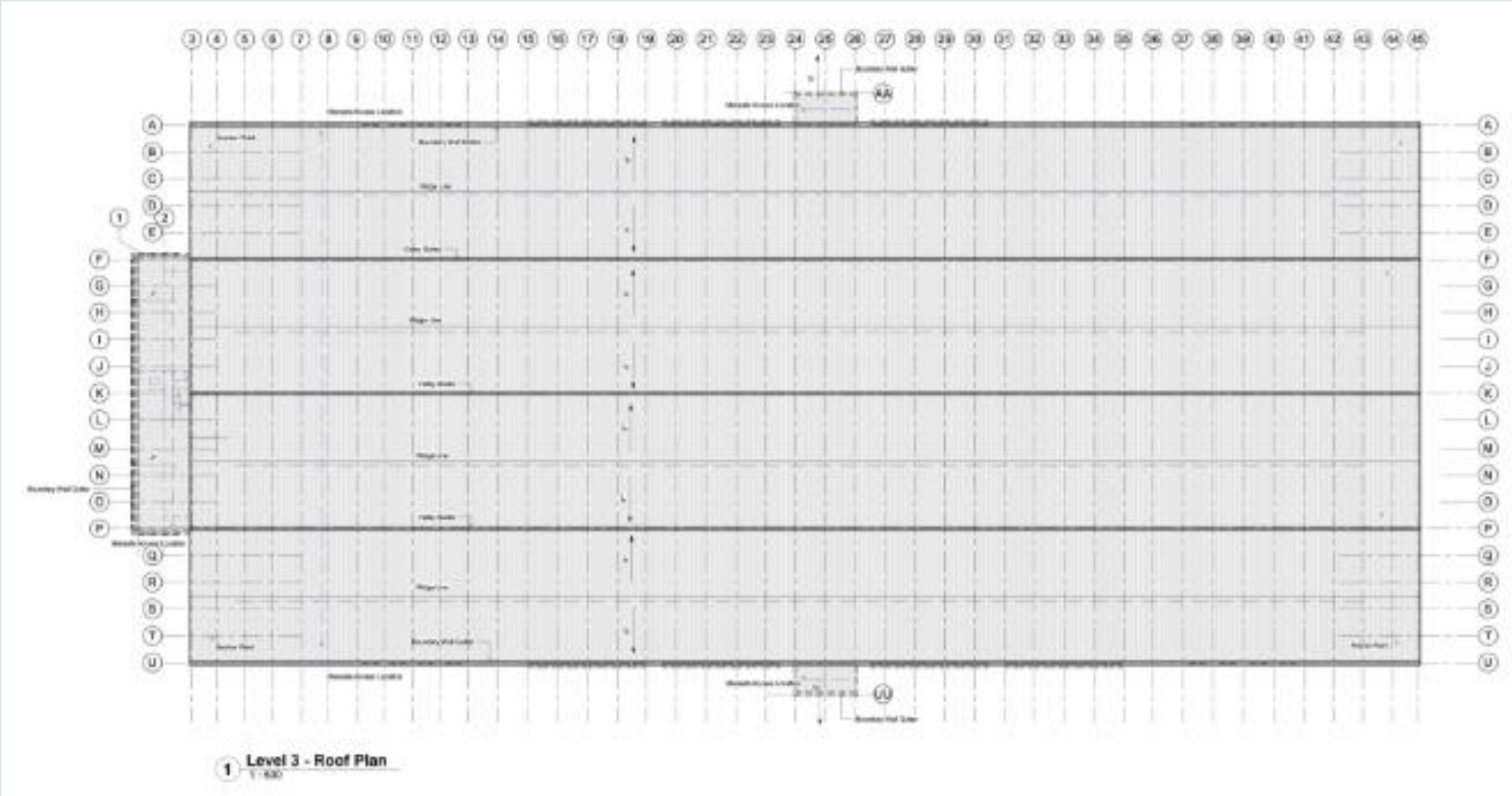
1 Level 0 Ground Floor
1:500

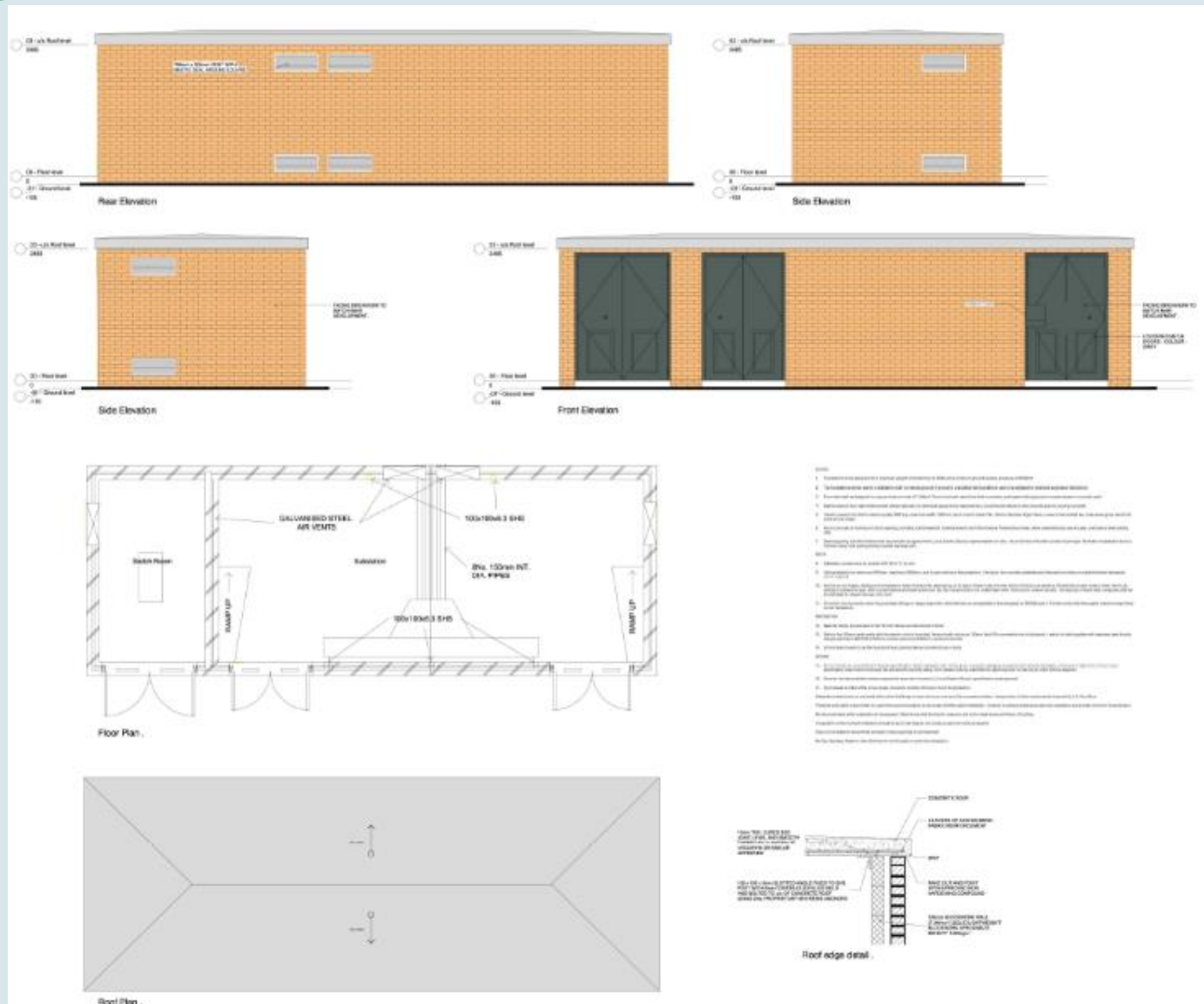


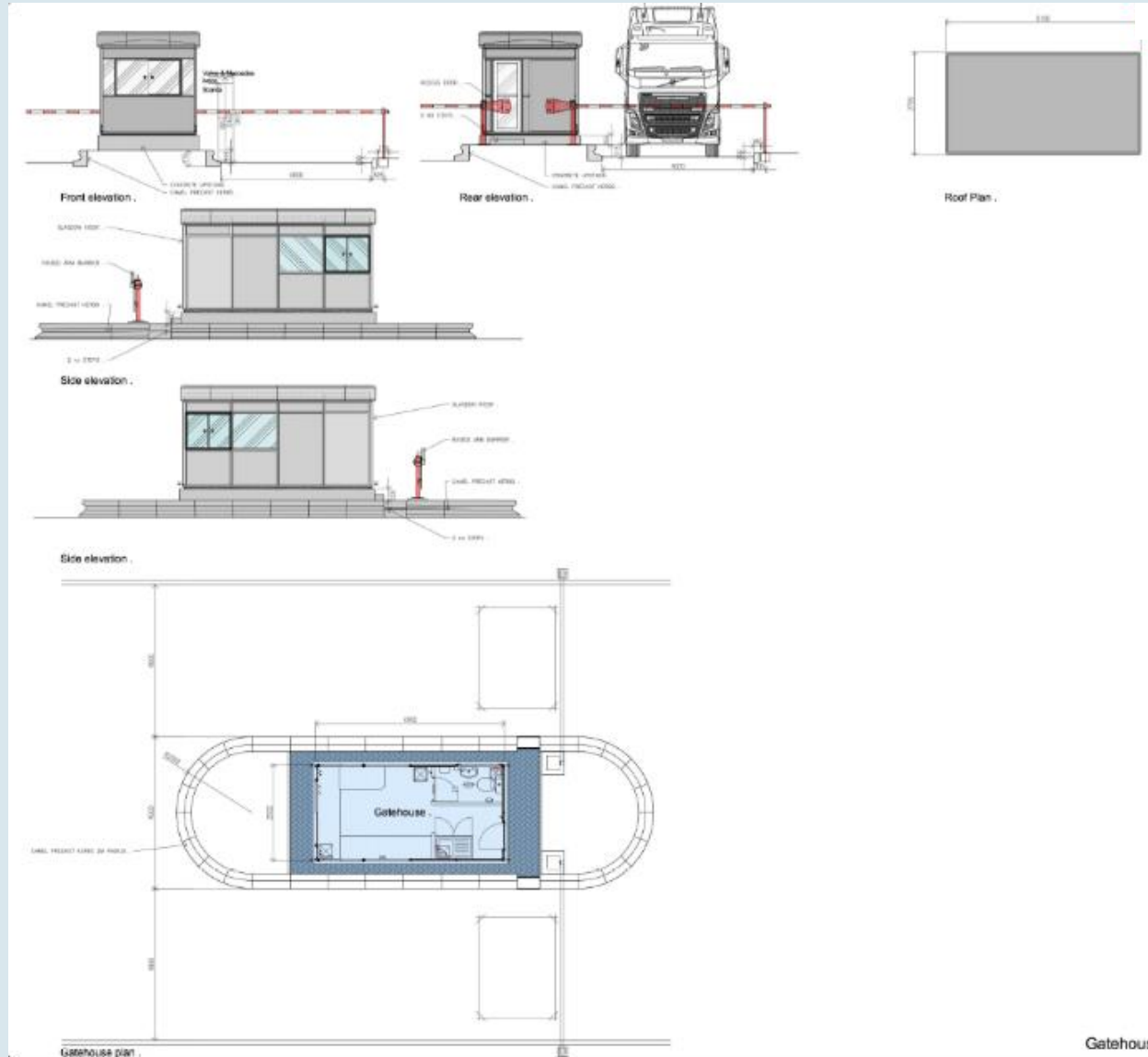
2 Level 1 First Floor Offices
1:500

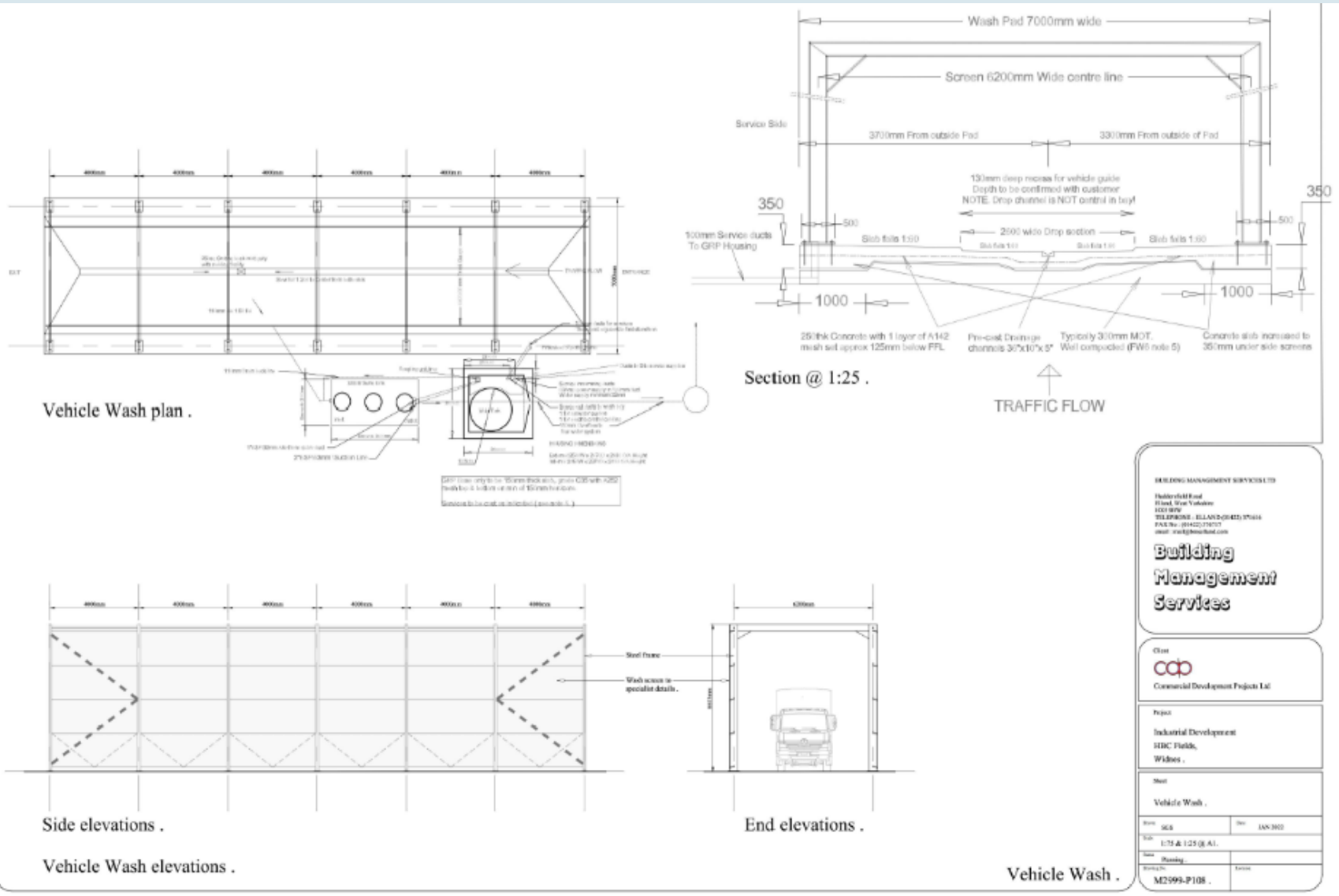


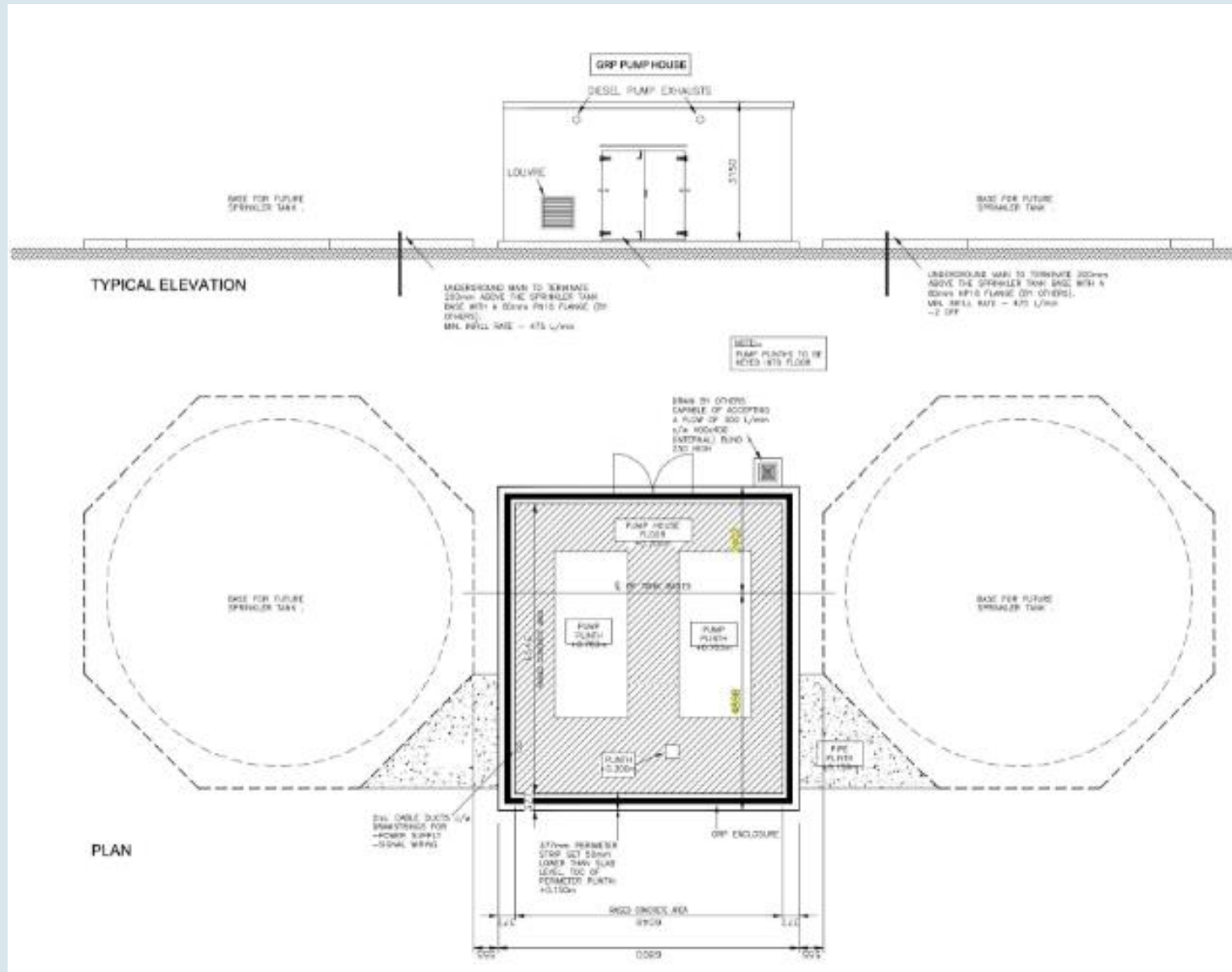
3 Level 2 Second Floor Offices
1:500













1 South Elevation - a
1:250

General Materials

Roof - Tye steel Coloursol HPS 200 HPS300 Ultra coated profiled steel cladding. Colour - Greenwing Grey
 Rooflights - 10% Rooflights to Warehouse roof area.
 Walls - vertical cladding - Tye Steel Coloursol HPS200 Ultra coated profiled steel cladding. Colour - Alaska Grey RAL 7000.
 Walls - horizontal cladding - Tye Steel Coloursol HPS200 Ultra coated profiled steel cladding. Colour - Albatross RAL 340 90 95.
 Floorings - Pre-formed basins, colour - Black RAL 9005.
 Eaves Fascia - Pre-formed fascia, colour - Black RAL 9005.
 Windows, Curtain Walling & doors - Polyester powder coated aluminium frames, colour - RAL 7000. Glass - solar reflective glass.
 Fire escape doors - steel door sets, colour - Alaska Grey RAL 7000
 Level entry doors - pre-finished, colour - Alaska Grey RAL 7000
 Office Entrance Features - Kingspan Month Composite panels, Spectrum finish colour Black RAL 9005
 Office Back Cladding - Kingspan Month Composite panels, Spectrum finish colour Pearl RAL 9010
 Gabletop Corner Features Panels - Kingspan Month Composite panels, Spectrum finish colour Pearl RAL 9010, Silver RAL 9005, Graphite RAL 9033, Black RAL 9005
 Office Solar shading - RAL 7000
 Low Level Edderock to Office Back to be bitlock Sandelwood 2751 with natural mortar.
 Retaining Walls & low level plinth to Warehouse Area - Pre Cast Concrete
 All colours & materials to be agreed with Local Authority.



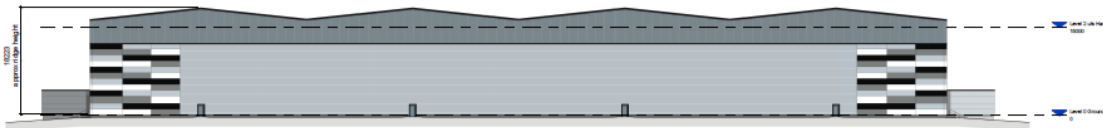
2 South Elevation - b
1:250



3 North Elevation - a
1:250



4 North Elevation - b
1:250



5 East Elevation
1:250



6 West Elevation - Facing Car Park
1:250

